



BUSINESS RECYCLING - IT'S THE LAW!

AB 341

This law requires California commercial businesses and public entities that generate four (4) or more cubic yards of waste per week and multi-family housing complexes with five (5) or more units, to adopt recycling practices.

AB 1826

Requires businesses that generate two (2) or more yards of municipal solid waste (recycling, organics, and landfill) per week to arrange for organic recycling services.

SB 1383

Establishes methane emissions reduction targets in a statewide effort to reduce emissions. In accordance to this law, all local jurisdictions must provide organic waste collection services to all residential and commercial generators by January 1, 2022, to divert this material from landfills. Organic waste includes food scraps and green waste such as landscape and pruning waste.

AB 827

Requires businesses to make composting and recycling bins accessible to customers and clearly marked with educational signage indicating what is accepted in the local solid waste programs.

Additional information about California's business recycling requirements is available from the California Department of Resources Recycling and Recovery (CalRecycle) at <http://www.calrecycle.gov/recycle/commercial>.

START A RECYCLING PROGRAM

Customized Program

CR&R offers free assistance for businesses seeking to improve their current recycling and waste programs. A CR&R Sustainability Specialist will evaluate your business from the inside out to achieve the most successful recycling program possible. Please contact Matthew Gray at matthewg@crrmail.com or 760.908.9882 with any questions you may have.

Training/Assistance

Once your business decides to implement a program, CR&R's Sustainability Specialist can assist in the training of your employees. We'll provide educational materials explaining the program in depth. One of the keys to a successful program is education from the executive management to the janitorial staff.

FOOD SCRAP RECYCLING

Returning organic materials to the soil significantly reduces the environmental impacts of landfills, reduces greenhouse gases, creates jobs, and helps sustain California's agricultural industry. CR&R has developed a Food Scrap Recycling collection program to help businesses comply with State law.

Have excess food to donate?

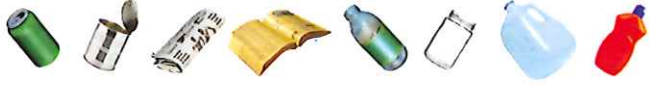
If you are interested in donating prepared or nonperishable food, contact one of CR&R's Food Rescue Partners:
 Imperial Valley Food bank at <https://www.ivfoodbank.org/>



BUSINESS RECYCLING - IT'S THE LAW!

These items are recyclable and should be placed in your recycle bin or recycle cart:

- Metal
- Paper
- Glass
- Plastic



CONTAINER SIZES

CART SIZES GREEN WASTE

90 GAL
2-Yard



FOOD SCRAP

35 GAL
65 GAL



BIN SIZES LANDFILL

3 YARD
4 YARD
6 YARD



RECYCLE

3 YARD
4 YARD
6 YARD



BULKY ITEMS, ELECTRONIC WASTE and WHITE GOODS

Items that cannot properly fit in your container, such as a chair or desk, are considered bulky items and require a special pick up. Electronic waste (e-waste) is anything with a circuit board or battery powered. White goods (e.g. refrigerators, freezers) and e-waste cannot be disposed of in your container. CR&R will collect and properly recycle these items. For pricing, please call customer service.

HAZARDOUS WASTE / BATTERIES

Hazardous waste are products that are flammable, corrosive, reactive or toxic. Discarded batteries are hazardous waste in California. Therefore, it is illegal to dispose of them in regular trash or recycling; so do not place them in any of your collection containers. This includes batteries of all types and sizes: Alkaline (AAA, AA, C, D, 9 volt), Lithium-Ion (button cell, power tool batteries, camera batteries, other electronics), Ni-Cad (power tools), rechargeable and single use.

Why is it important? Lithium-ion batteries can cause fires in recycling centers, landfills, and garbage and recycling trucks when improperly disposed.



For additional information: <http://www.calrecycle.ca.gov/reducewaste/batteries>

Examples of Hazardous Waste include:

- Fluorescent light tubes
- Batteries
- Latex or water based paint
- Non empty aerosol cans
- Thermostats
- High intensity discharge lamps

For more information on Battery and Hazardous Waste disposal options for your business contact Imperial Valley Resource Management at 760-337-4537 or <http://www.ivrma.org>.

Holiday Schedule: Non-Collection Days

- | | | |
|----------------|------------------|------------------|
| New Year's Day | Memorial Day | Independence Day |
| Labor Day | Thanksgiving Day | Christmas Day |

If the holiday falls during the week, collection services for the remainder of that week may be postponed by one day.

Customer Service
760.482.5656
crrwasteservices.com
Monday-Friday 8:00 am to 5:00 pm

